



Church Street, Stratford-upon-Avon, CV37 6HB

**SHELDON
BOSLEY
KNIGHT**

LAND AND
PROPERTY
PROFESSIONALS

Property Description

*** AVAILABLE 1st JUNE *** A well presented, three bedroom Georgian Townhouse situated in the heart of Stratford-upon-Avon's town centre. The property briefly comprises: hallway, good size living room and separate dining room, fitted kitchen with a range of wall and base units and appliances including a free standing washing machine & a oven/hob. Upstairs are three double bedrooms and a shower room. The property benefits from having a courtyard garden to the rear, an outbuilding store & basement. (Residents parking permits would be obtainable from the local council for on street parking) Unfurnished, Council Tax Band E. Energy Rating D. No pets permitted.

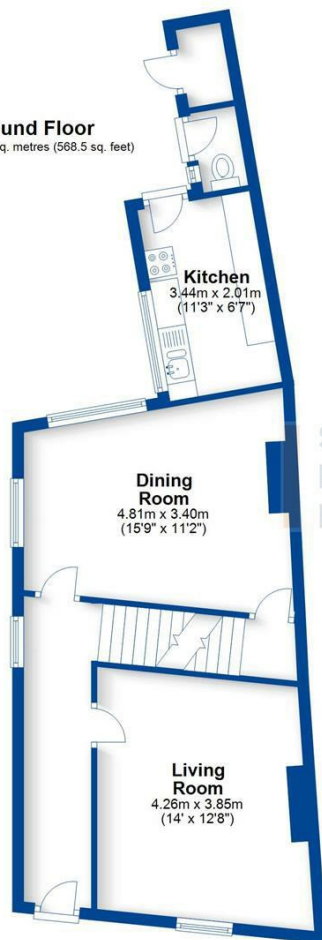




Key Features

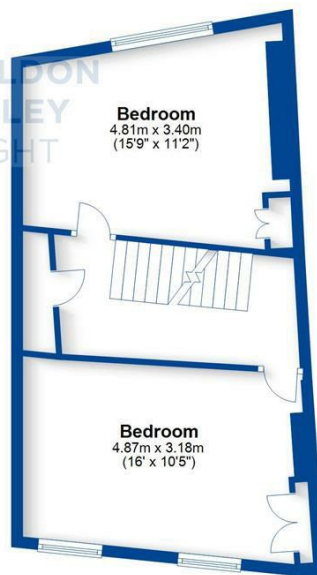
- AVAILABLE 1st JUNE
- Stratford Town Centre
- 3 Bedrooms
- Townhouse
- Unfurnished
- Rear Courtyard
- On Street Parking
- Council Tax Band E
- Energy Rating D
- No Pets Permitted

Ground Floor
Approx. 52.8 sq. metres (568.5 sq. feet)



Total area: approx. 140.6 sq. metres (1513.7 sq. feet)
This plan is for illustration purposes only and should not be relied upon as a statement of fact
Property of Sheldon Bosley Knight Limited. Not to be reproduced

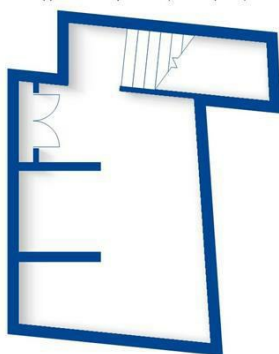
First Floor
Approx. 43.3 sq. metres (466.2 sq. feet)



Second Floor
Approx. 26.8 sq. metres (288.8 sq. feet)



Basement
Approx. 17.7 sq. metres (190.2 sq. feet)



**£1,250 Per
Calendar Month**